

Nasuyumoto Onsen

Blancvert Nasu Hotel

Address 206-194, Yumoto, Nasumachi
Telephone 0 2 8 7 - 7 4 - 5 5 8 8
Website <http://blancvert-nasu.com/en/>



Facility Information

Please have a relaxing time in a quiet space surrounded by woods.
The reserved parking for the disabled is right next to the hotel entrance (for two cars).

Barrier-free Information

○Communal Area

Handrails	Available
Gaps	None *Slopes are provided at every step for wheelchair passage.
Elevator	Available Door width: 80cm

Notes:

Communal areas got rid of unevenness as much as possible to enable wheelchair users to safely access guestrooms.



Slope to the entrance



Reception



Elevator



Hallway

○Rooms

Room type	Twin bedroom (Western style)
Toilet	Accessible with wheelchair
In-room bathtub	Equipped with handrails
Beds	Available. 60cm (height)
Corridor width	90cm (No handrails in the room)



Entrance



Bath & Toilet



Bath & Toilet



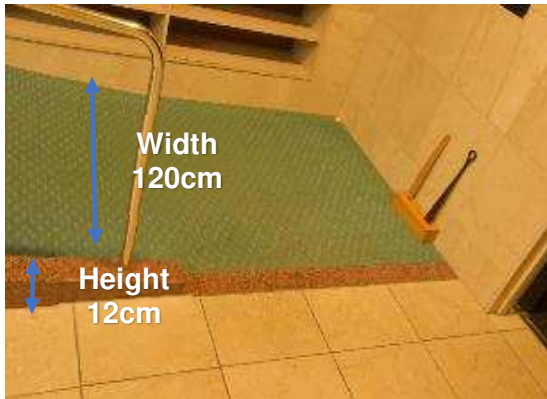
Beds



Rooms

○Communal Bathhouse

Rental wheelchair for entry to hot spring	Not available
Access from guestroom to changing room	No gaps. Accessible with wheelchair (slopes on the way).
Handrails and gaps	Handrails and chairs are provided in the bathtubs and the bathhouse. There are some gaps.
Chartered bath	Not available
Bathing suit	Not available
Bathing service for ostomates	Not available
Bathing assistance	Please ask in advance



Access to the changing room entrance: Sloped



Entrance from the changing room to the bathroom



Communal Bathhouse:
There are steps inside the bathtub

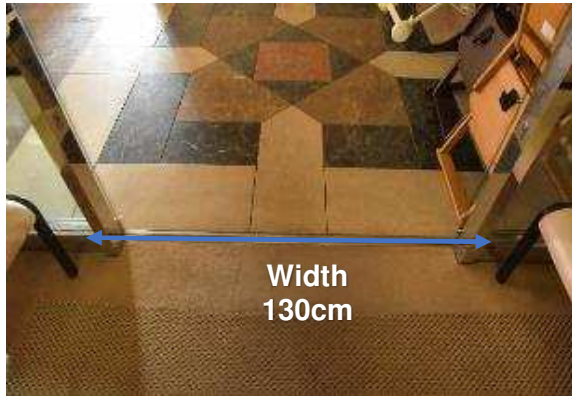


Open-air bathes

○Dining

Dining tables & chairs	Available
Buffet serving assistance	Please ask in advance
In-room dining	Not available

We try our best to cater to various needs of guests, such as allergy-free meals, chopped meals for easy digestion, indication of ingredients, etc. Please consult us in advance.



Dining hall entrance



Buffet hall

○Other Barrier-free Information

Toilets for ostomates	Not available
Wheelchair-friendly taxi service	Please request at the reception. We call the nearest taxi company for availability.
Toilet for service dogs	Not available
Multilingual service	English & Chinese available
Handicap parking	Parking space near the entrance is available
Tactile paving	Tactile paving available. *Please ask reception staff for assistance.
Voice-assisted calling system	
Signs in Braille within the facility	
Sign language	Not available
Alarm lamp	Not available
Written communications	Available